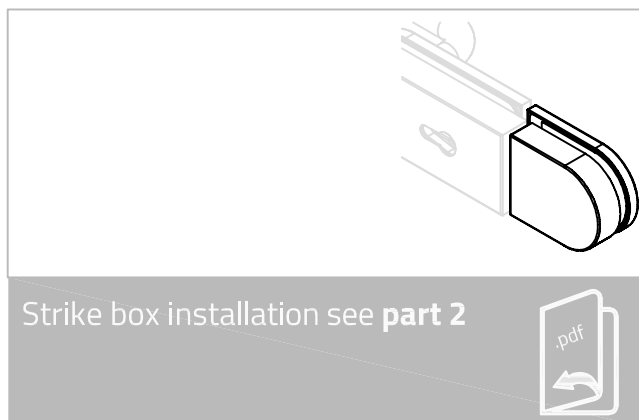
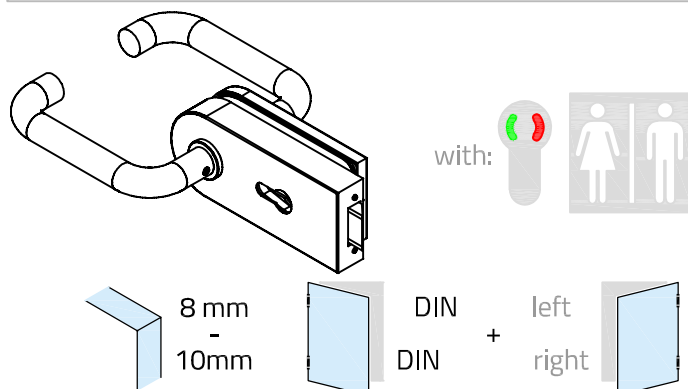


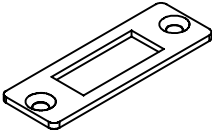
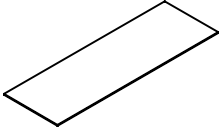
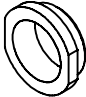

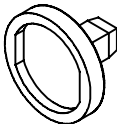
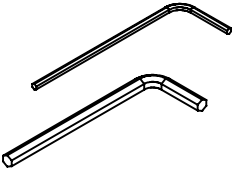
# Installation Instruction

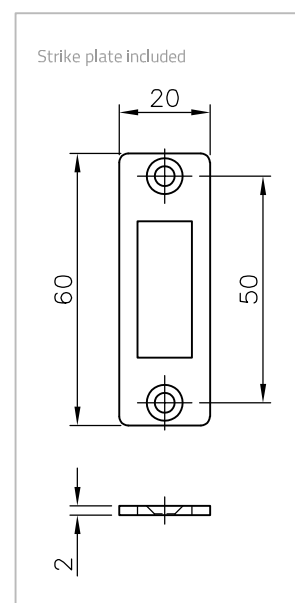
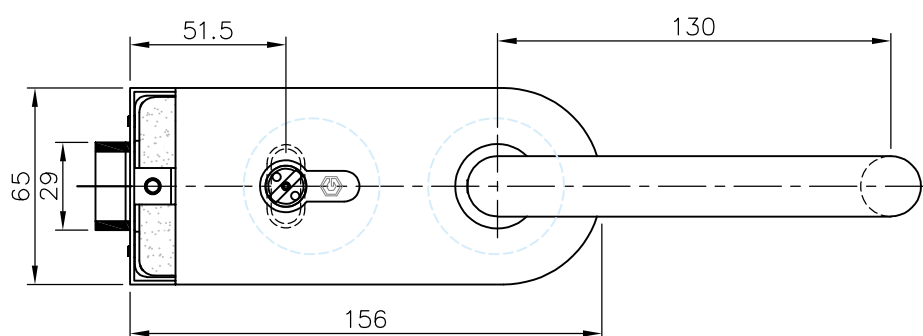
Part 1

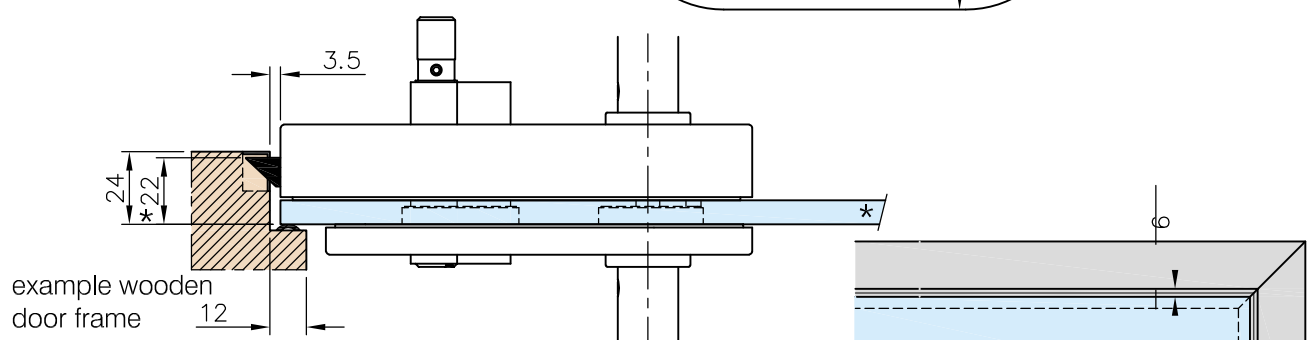
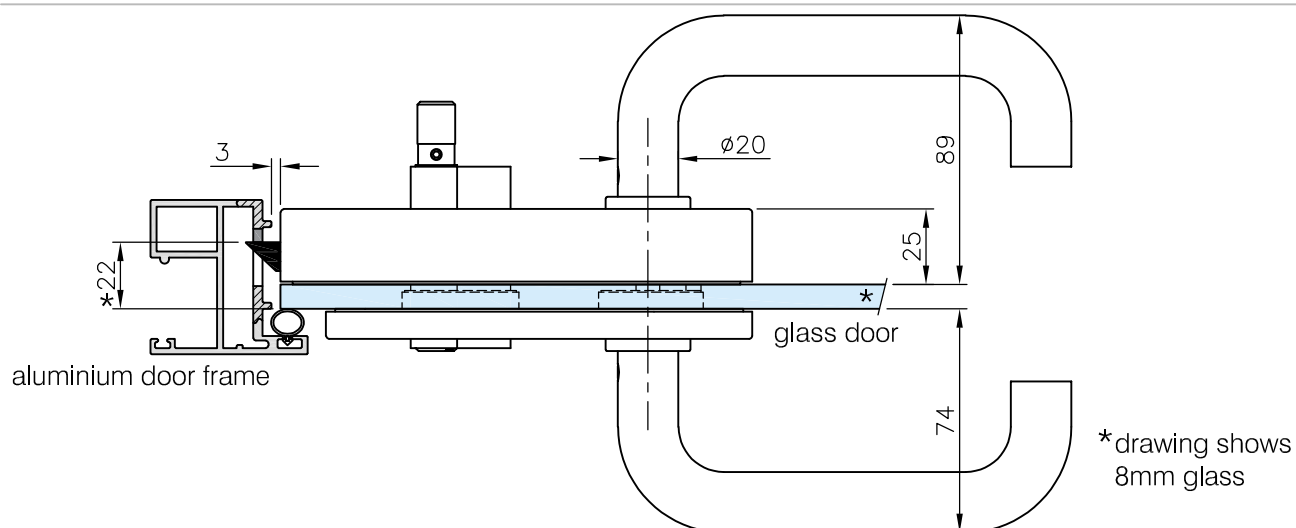
## Glass Door Lock with Handles & Indicator For Bathroom & Toilet



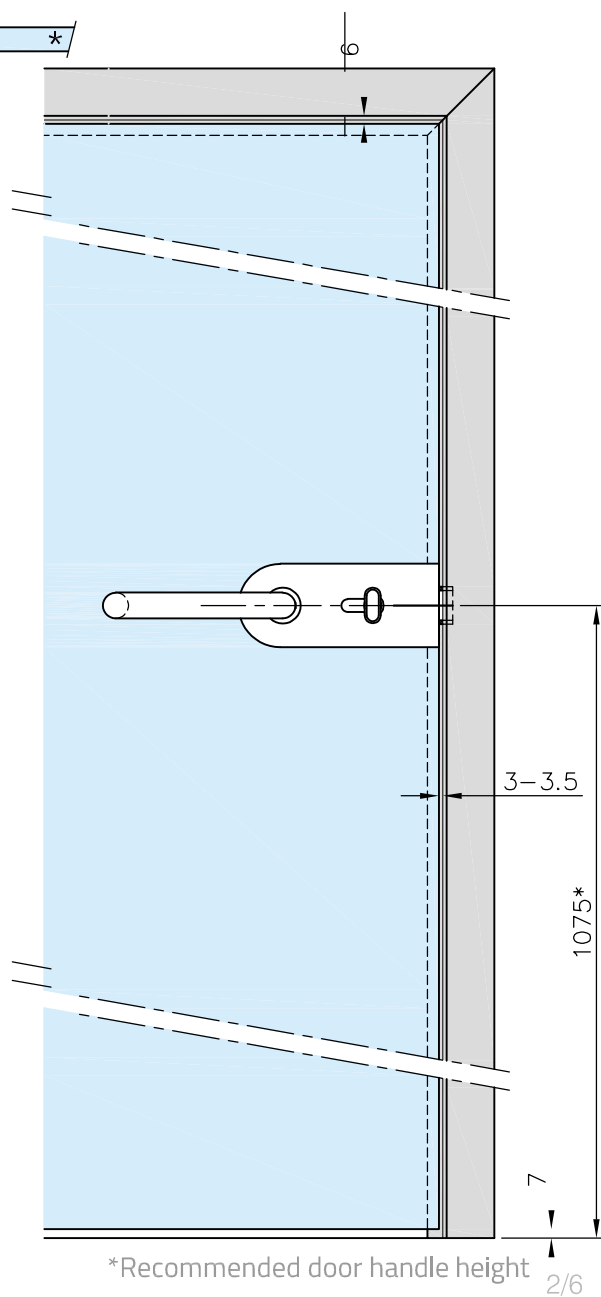
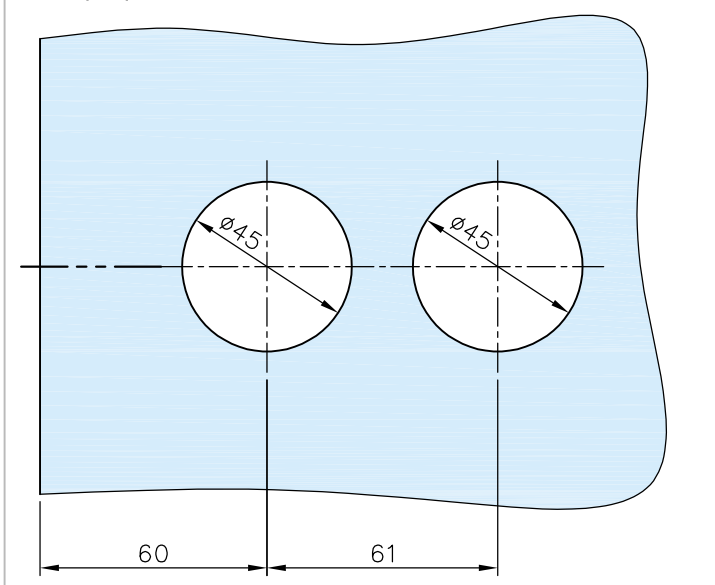
### Scope of supply

			
Strike plate	Cover stripe	Handle guide rings for Ø16mm and Ø18mm	Cover rings for Ø16mm and Ø18mm handles
			
Mounting tool	Allen key - 4mm/3mm and 2mm		

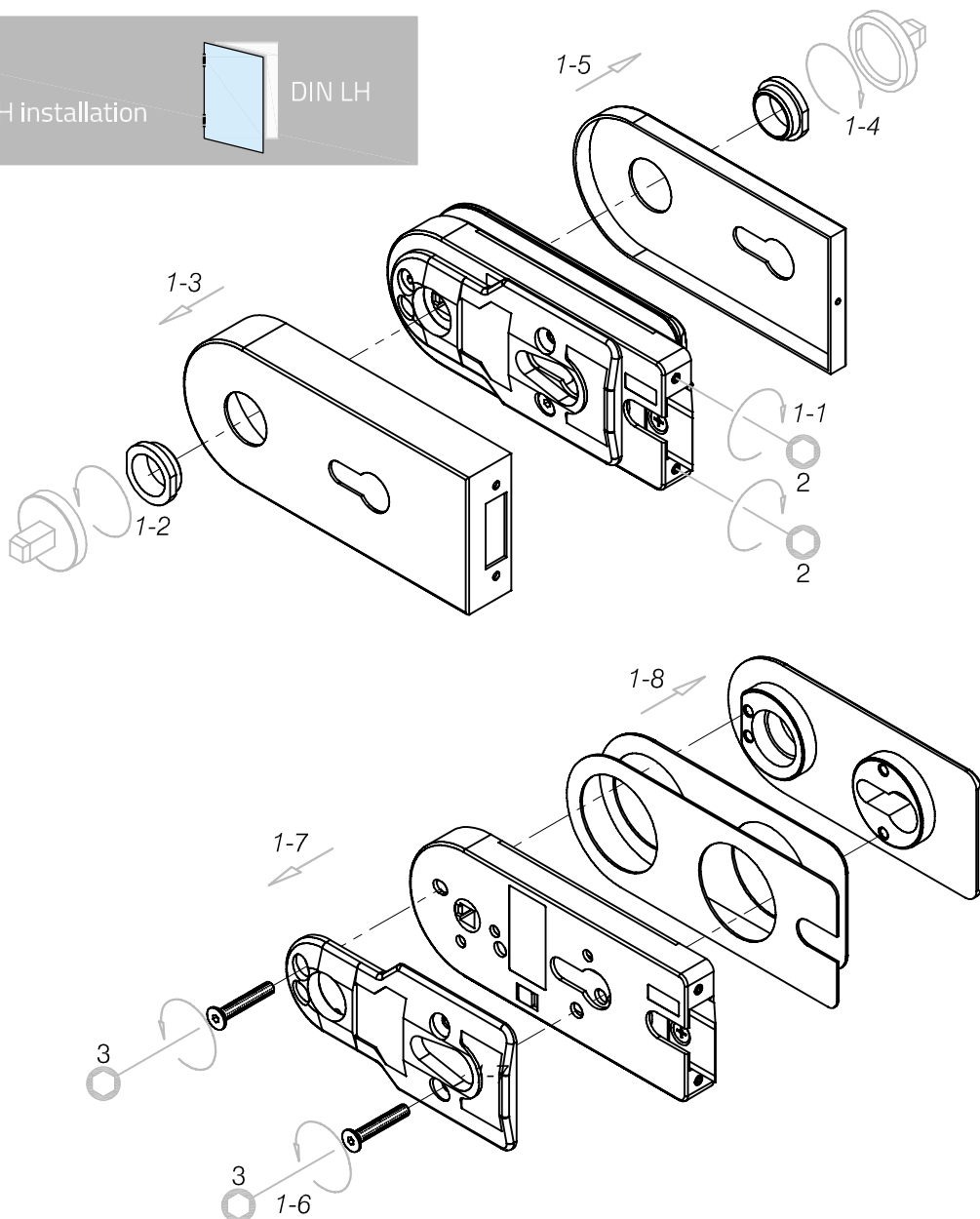




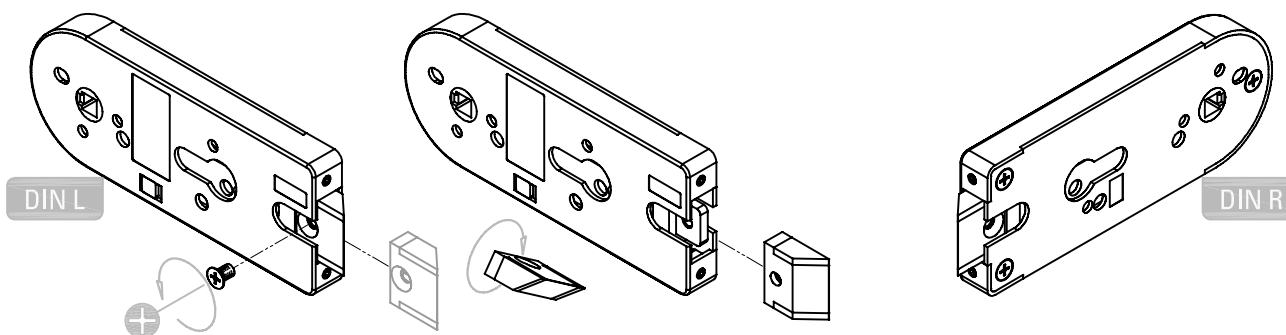
#### Glass preparation:



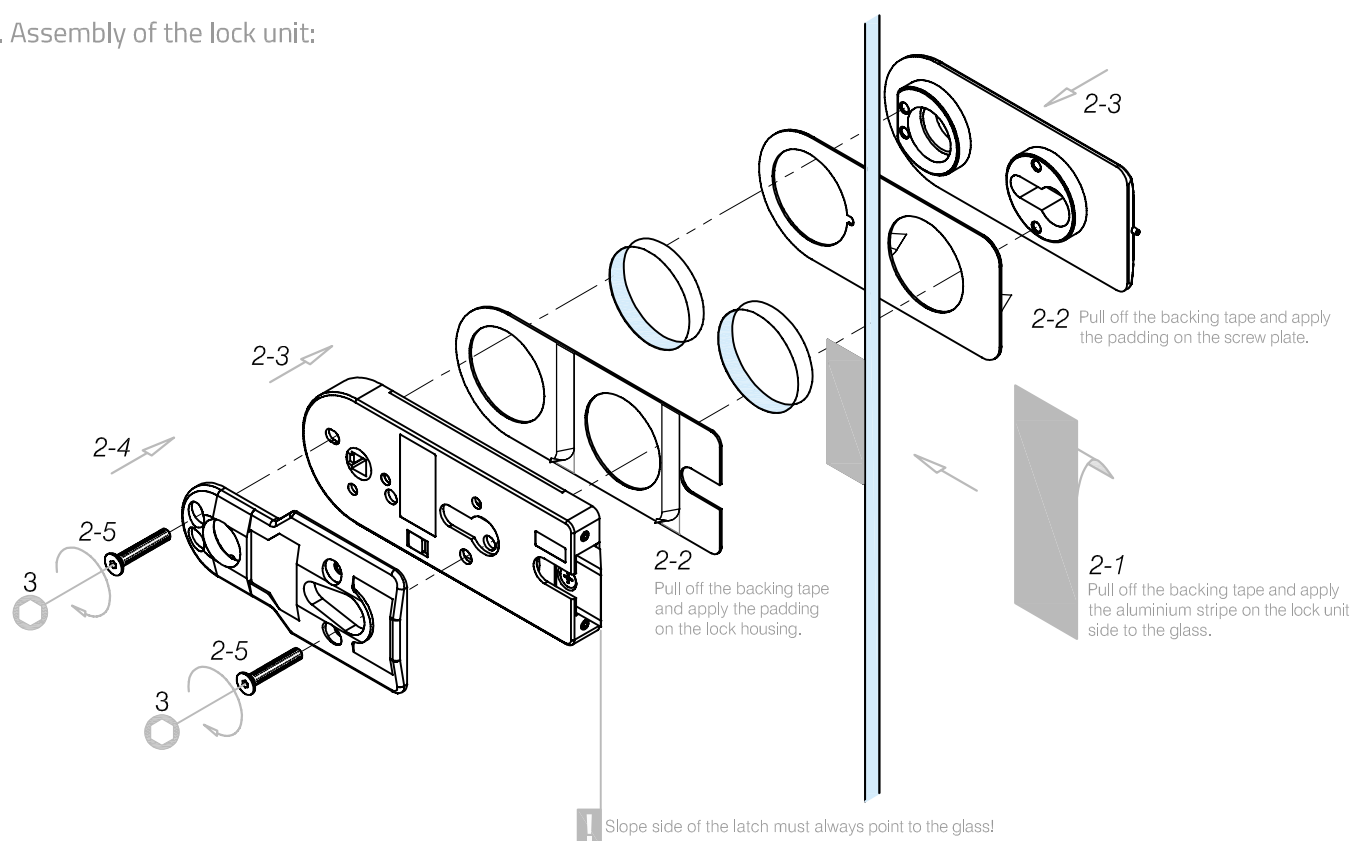
# 1. door lock preperation:



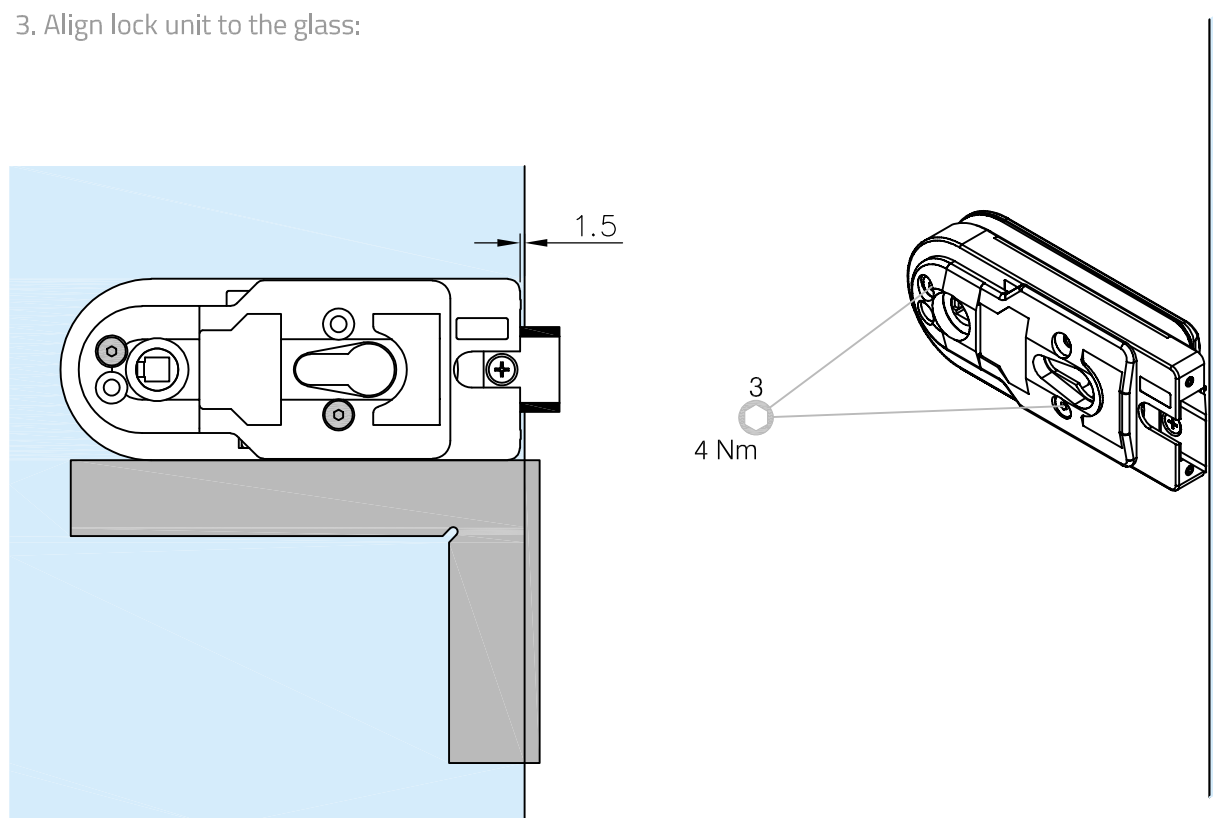
**!** Please attend the desired DIN direction and retrofit the latch if necessary.



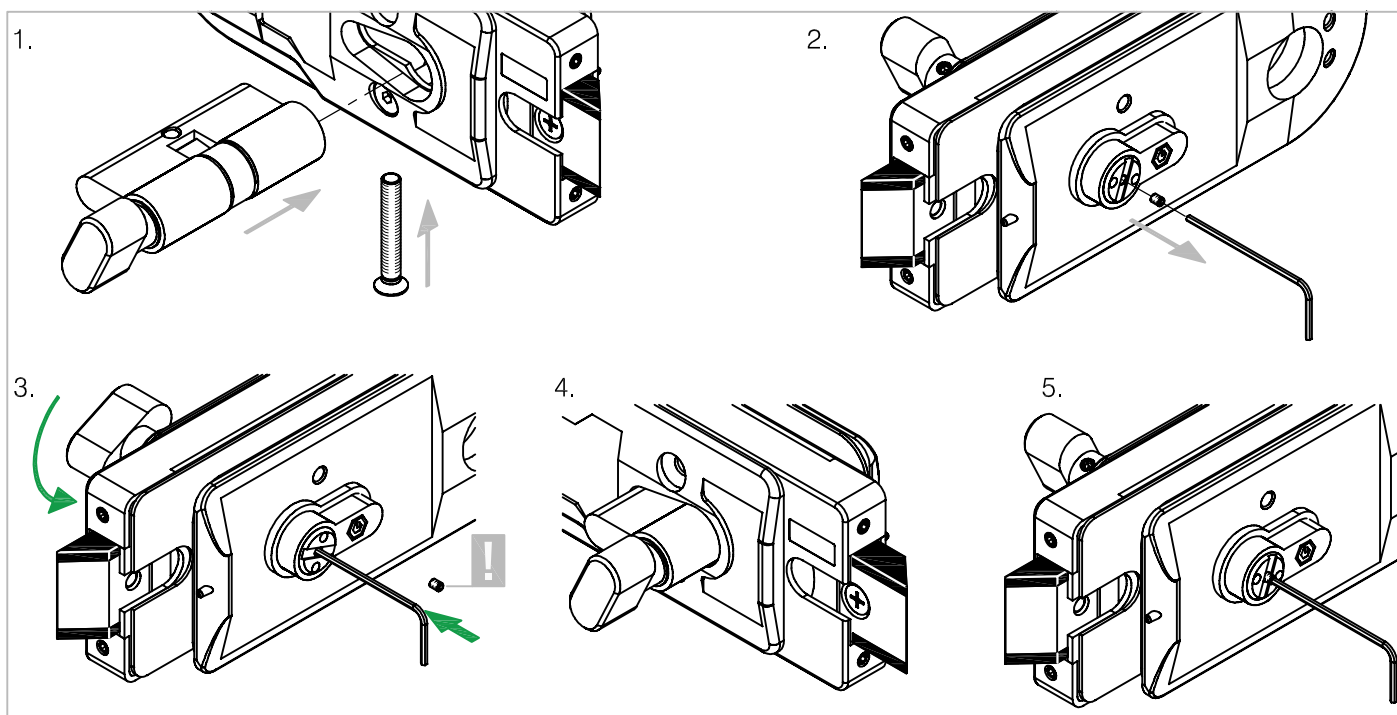
## 2. Assembly of the lock unit:



## 3. Align lock unit to the glass:

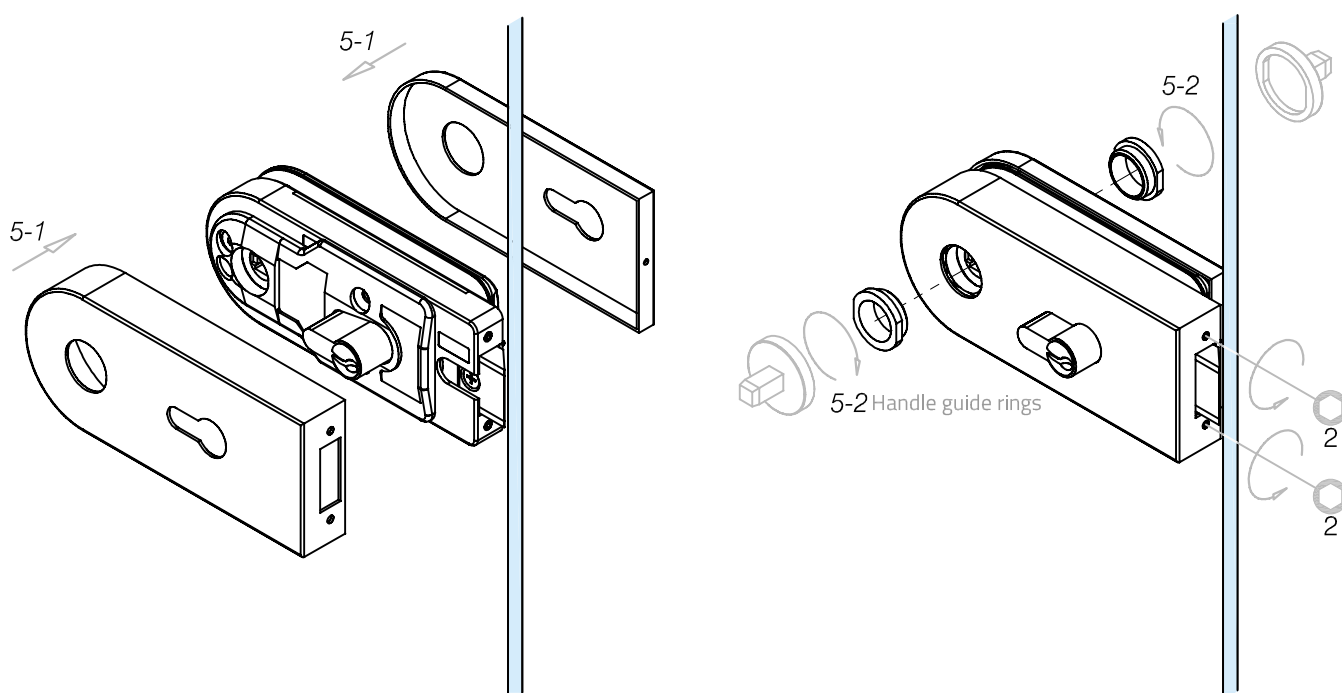


#### 4. Fitting the locking cylinder:



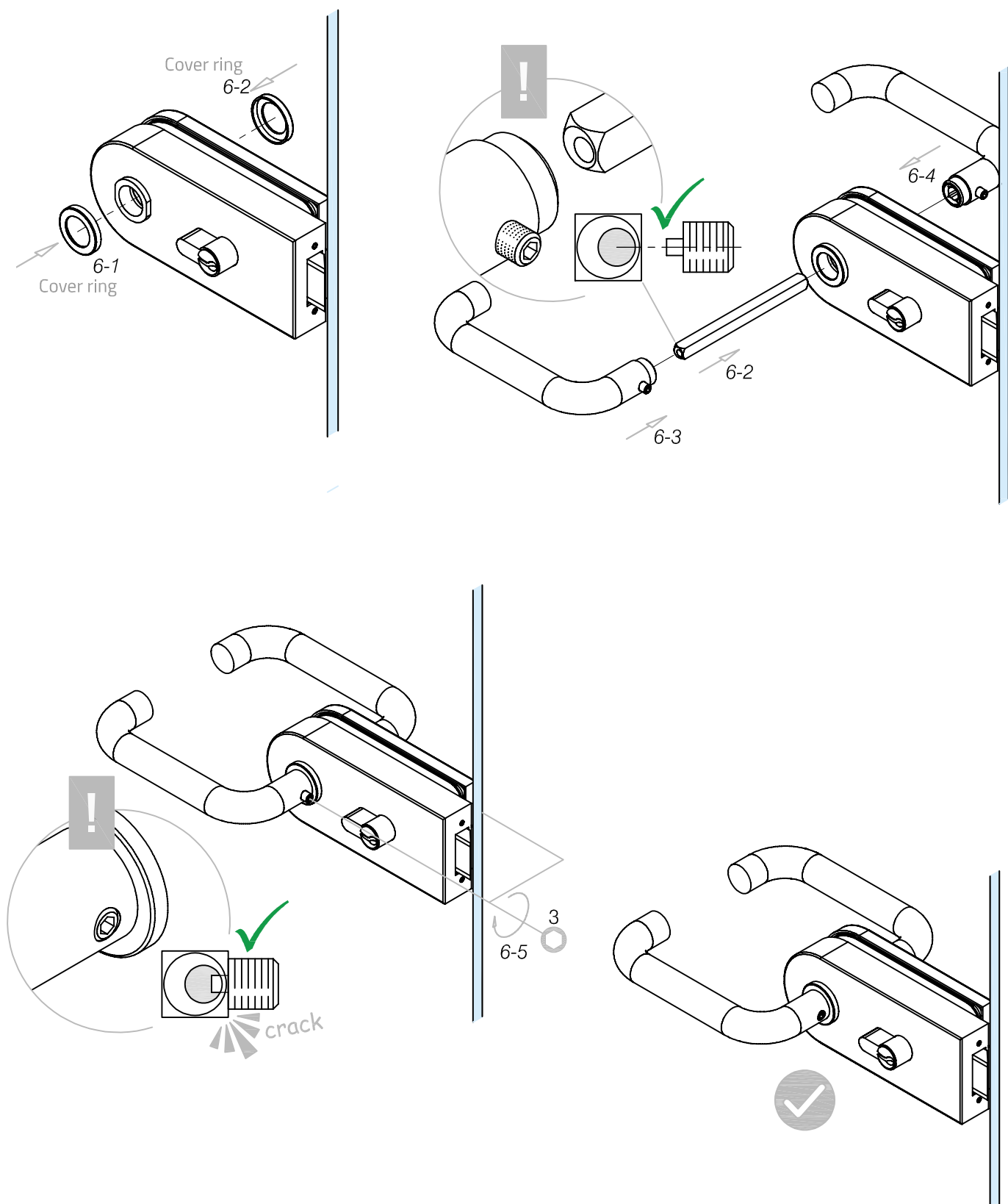
1. Place the cylinder in the lock with the knob on the desired side and mount it with the supplied screw.
2. Remove the set screw from the cylinder.
3. Press the Allen key into the cylinder while turning the knob in the locking direction until you feel resistance.
4. Remove the Allen key while simultaneously turning the knob. - The lock engages.
5. Screw the set screw back into the cylinder and test the correct operation of the cylinder and lock.

#### 5. Assembly of the cover caps:



## 6. Assembly of the lever handles:

Your Lever Handles may be different model with different shape or dimensions.



Opening direction - variations "red-green" display:

