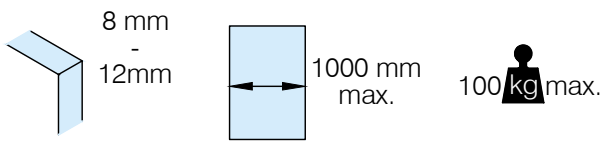


# Ceiling Mounted Sliding Door System

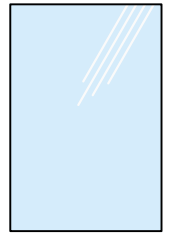
Item Code: SLD-AL-301

Stand 02.2019

www.KerolHardware.co.uk

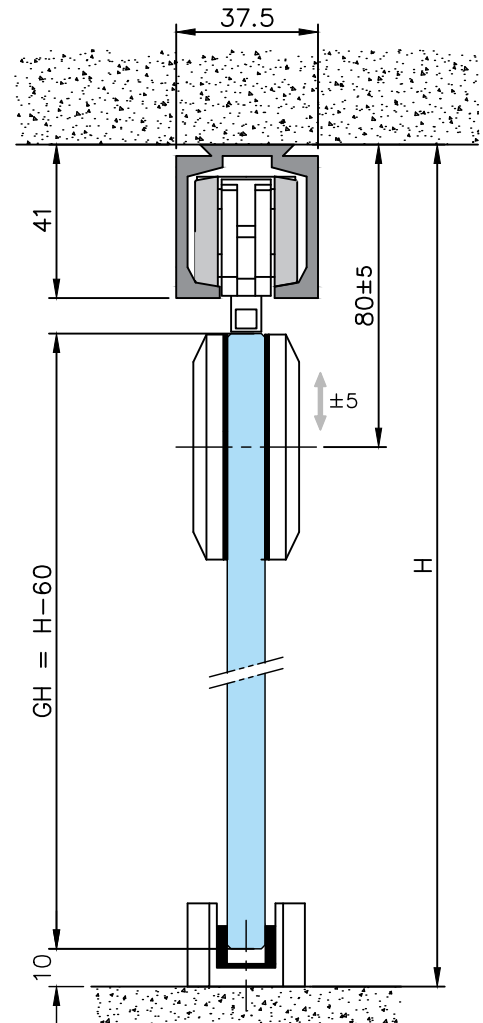
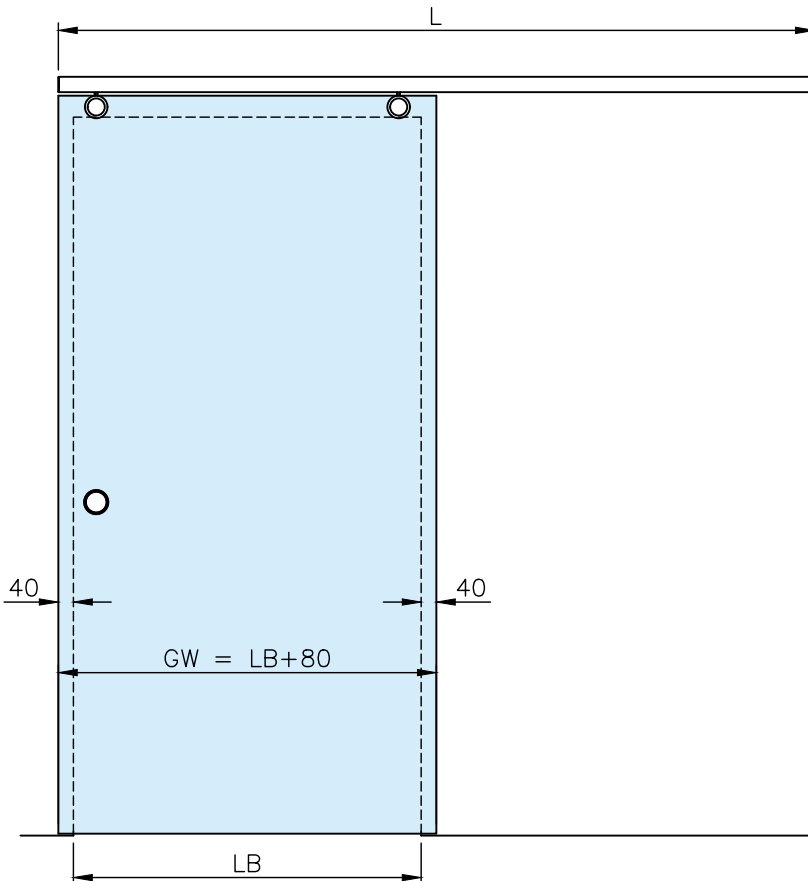


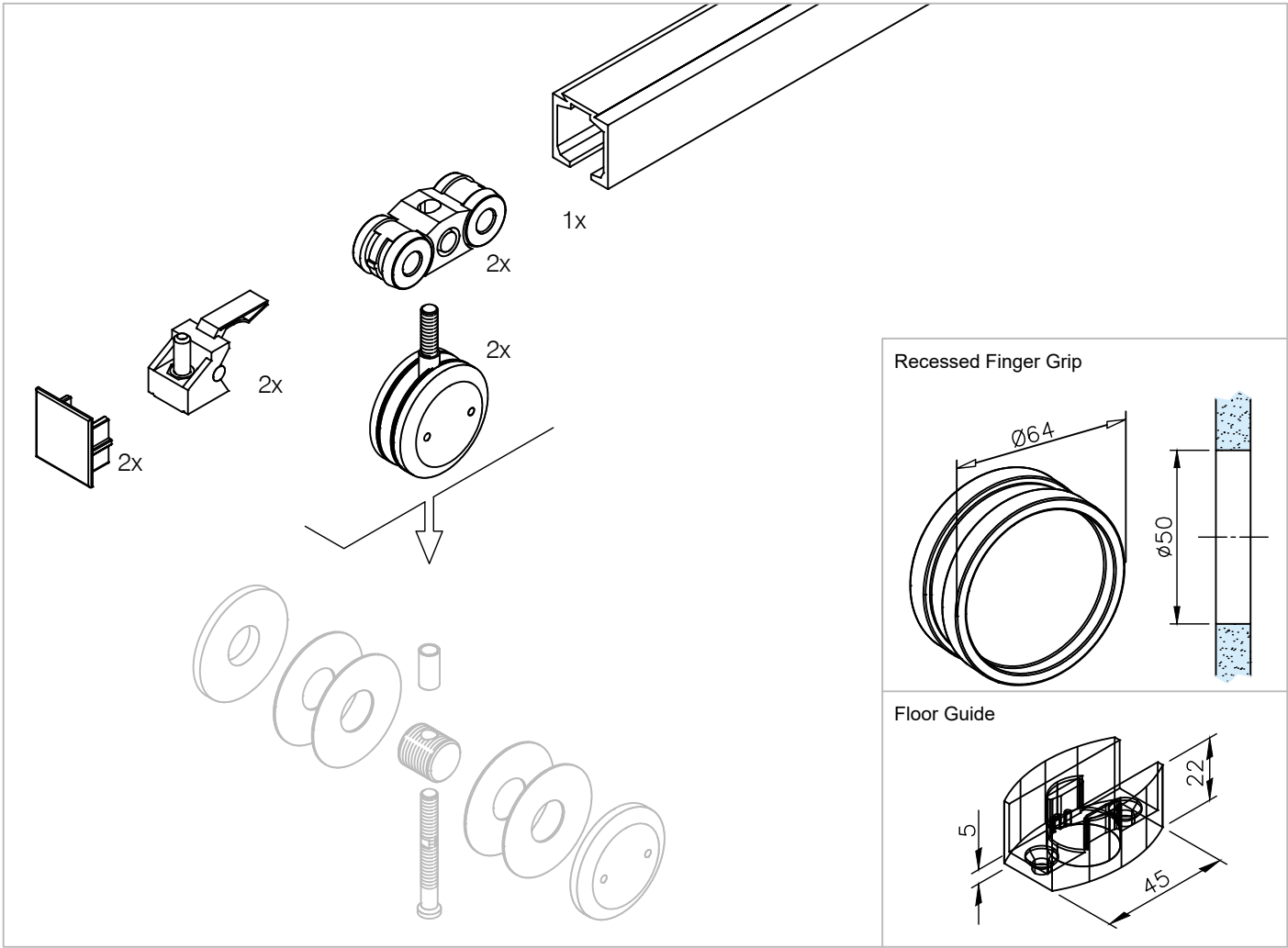
Hardware **ONLY**.  
No Glass Door supplied.



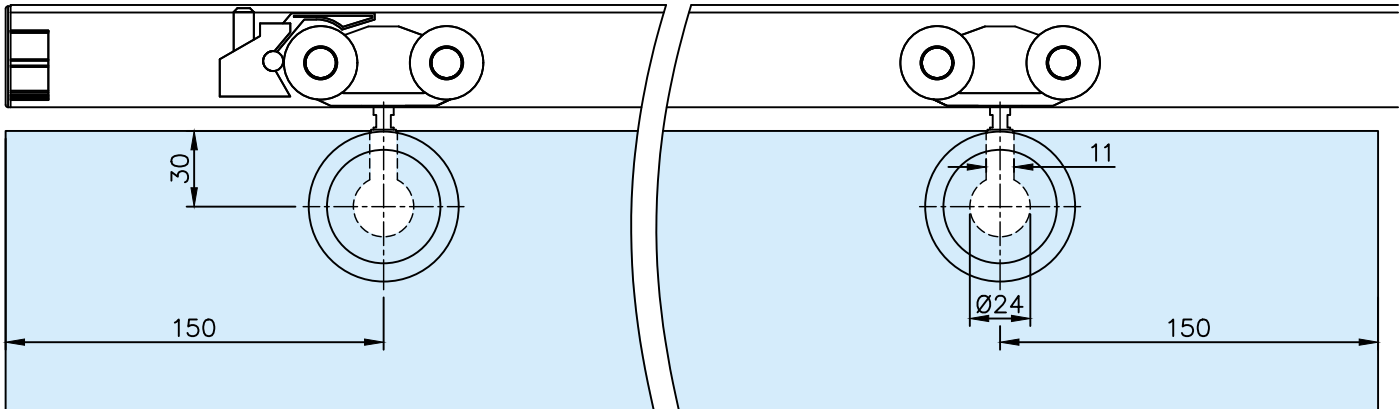
## Glass Door Dimensions:

- LB = min. 420mm - max. 920mm
- GW = LB + 80mm (min. 500mm - max. 1000mm)
- L = GW x 2 (max. 2000mm)
- GH = H - 60mm





**Glass Fabrication:**



**IMPORTANT :** The glass clamping area (cut-out) must be cleaned with non-solvent based cleaners prior to installation. Do not use thinners (solvents)!